

EXPOSED GRID FLAT LAY-IN

Ceildoor Products Ltd Planetary House Planetary Road Willenhall Wolverhampton WV13 3SW

Composition of Hatches.

Frame:

1.2mm zintec, welded construction to create a rigid composition then powder-coated white to all surfaces. (other colours available to order).

Door :

0.9mm zintec folded to all sides to create a rigid door shell then powder coated white to all surfaces. (other colours available to order).

Lock/s:

All units are fitted with budget locks as standard, however other locks such as tamper proof locks, key retaining locks and touch latches can be fitted to order.

Fitting

The frame should be screw fixed into position in the opening using the fixing holes located on all four sides of the framework. It is recommended that sufficient independent bracing and support is obtained to ensure the safe opening and closing of the access hatch within its environment.

Extra protection against Moisture

Ceildoor metal access hatches are powder-coated white RAL 9010 full polyester paint. Even though the majority of access hatches are used internally, we use full polyester powder coating which is recommended for general exterior situations, where good weathering resistance is required against high levels of atmospheric moisture or in particularly aggressive atmospheres. Stainless steel constructions are available to order.

Structural information

The drawings below provide the information with regards to structural opening information, this access hatch is installed into an exposed grid system, and therefore the size of the frame is dictated to by the grid alignment. The frame sits behind the T grid as shown below. Although the hatch is fairly light it is recommended that the frame is independently supported by hangers.

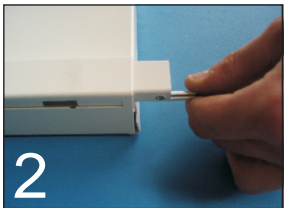
You can convert a FLB into a TLB

With the uni-hinge system it is easy to convert a hatch from a flat lay-in hatch into a regular lay-in hatch. The illustrations below give you a guide on the quick process to achieve this.

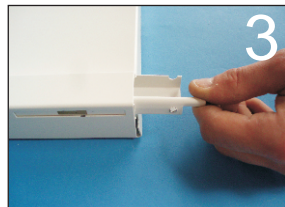
Remove the door from the frame



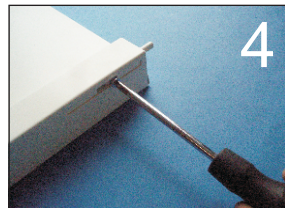
Remove the uni-hinge from the door channel



Turn the hinge around & re-insert it into the door channel.

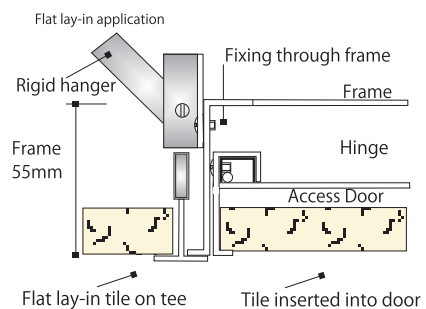


Screw the hinge back in place and re-fit the door into the frame.



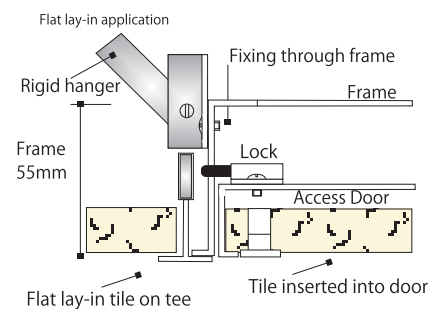
NFR Type

Ref: UNI/FLB (hinge end)



NFR Type

Ref: UNI/FLB (lock end)



Grid	Size	Dr. Type	Clear Opening	
			Door in	Door out
24mm	575 x 575	Single	572 x 532mm	575 x 572mm
	1175 x 575	Single	1172 x 532mm	1172 x 572mm
	1175 x 1175	Double	1172 x 1092mm	1172 x 1172mm
15mm	585 x 585	Single	582 x 542mm	582 x 582mm
	1185 x 585	Single	1182 x 542mm	1182 x 582mm
	1185 x 1185	Double	1182 x 1102mm	1182 x 1182mm

Safety

It is extremely important that immediately after use of the access hatch that you close and lock it. Failure to do so will effect and impair the performance of the environment where it has been installed in the event of fire.

All recommendations, suggestions on the use of our products are made in good faith and without guarantee since the conditions of use are beyond the control of Ceildoor. It is therefore the customers responsibility to ensure that each product is fit for its intended purpose and that the actual conditions of use are suitable. Ceildoor pursues a policy of continuous product development and reserves the right to amend specifications without notice.