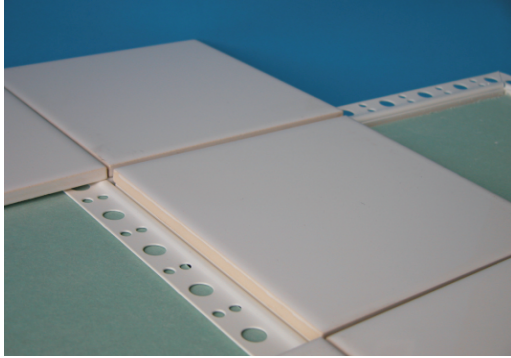


# TILED WALLS Ceramic Faced Door

Ceildoor Products Ltd Planetary House Planetary Road Willenhall Wolverhampton WV13 3SW

**Product: UNI/CTC**

**Extra protection against Moisture**

Ceildoor metal access hatches are powder-coated white RAL 9010 full polyester paint. Even though the majority of access hatches are used internally, we use full polyester powder coating which is recommended for general exterior situations, where good weathering resistance is required against high levels of atmospheric moisture or in particularly aggressive atmospheres. Stainless steel constructions are available to order.

**Composition of Hatches.**
**Frame:**

1.2mm zintec, welded construction to create a rigid composition then powder-coated white to all surfaces. (other colours available to order).

**Door :**

0.9mm zintec folded to all sides to create a rigid door shell then powder coated white to all surfaces. (other colours available to order).

**Lock/s:**

All units are fitted with budget locks as standard, however other locks such as tamper proof locks, key retaining locks and touch latches can be fitted to order.

**Fitting**

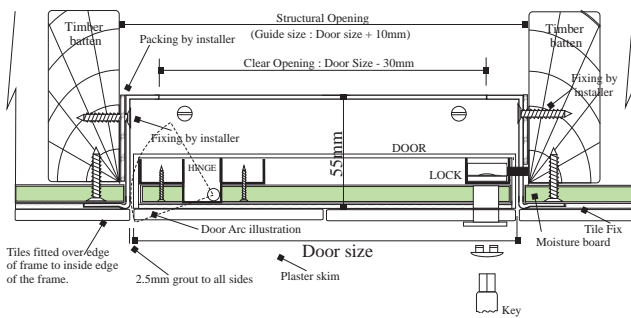
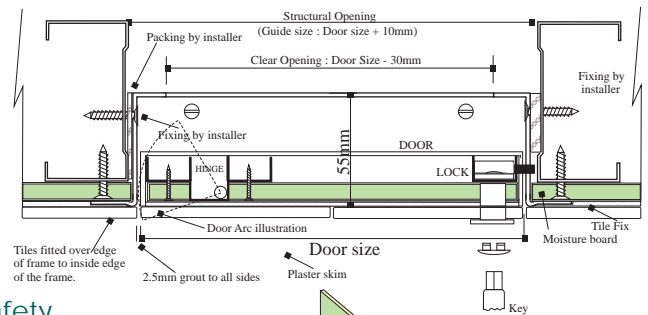
The frame should be screw fixed into position in the opening using the fixing holes located on all four sides of the framework. It is recommended that sufficient independent bracing and support is obtained to ensure the safe opening and closing of the access hatch within its environment.

**Structural information**

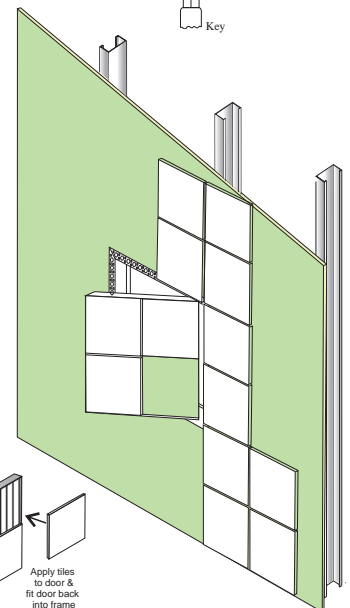
The drawings below provide the information with regards to structural opening information, however it is recommended that to create a sufficient opening to insert the access hatch frame you must add 10mm to the door size. Alternatively when ordering an access hatch to suit an opening take away 10mm from your opening dimension to achieve a door size.

**Door Movement**

The unique rigid hinge system on this hatch is designed to minimise door drop/sag, that may occur on the door when opened. Tile joints in normal environments are normally no more than 2 to 3mm, therefore this rigid hinge system assists with any damage occurring on the perimeter tiles adjoining the bottom of the door. The hinge system ensures the clearance on the hinge end is kept to the maximum of 2.5mm therefore within standard grout tolerances, whereas other products in the market require the minimum of 3mm to open.

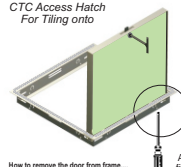
**Wall Application**
**Tiled Wall moisture board application (timber batten)**

**Wall Application**
**Tiled Wall moisture board application (stud wall)**

**Safety**

It is extremely important that immediately after use of the access hatch that you close and lock it. Failure to do so will effect and impair the performance of the environment where it has been installed in the event of fire.



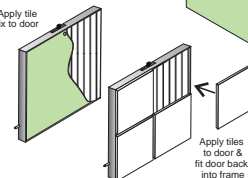
Shape and Size			
Listed below is a general guide to a size range to suit 150mm x 150mm tiles, however we can manufacture to any special size you may require subject to order and normal maximum size constraints. Just provide us with your tile size.			
Door size(mm)	Door Type	Structural opening	Internal Hatch opening
302 x 302	Single	312 x 312	237 x 270
606 x 302	Single	616 x 312	541 x 270
606 x 606	Single	616 x 616	541 x 570
910 x 606	Single	920 x 616	845 x 570
1214 x 606	Single	1224 x 616	1149 x 570

CTC Access Hatch For Tiling onto



How to remove the door from frame...

Apply tile fix to door



Apply tiles to door &amp; fit door back into frame

All recommendations, suggestions on the use of our products are made in good faith and without guarantee since the conditions of use are beyond the control of Ceildoor. It is therefore the customers responsibility to ensure that each product is fit for its intended purpose and that the actual conditions of use are suitable. Ceildoor pursues a policy of continuous product development and reserves the right to amend specifications without notice.